

Southwest Allen County Schools

4824 Homestead Road
Fort Wayne, Indiana 46814
Phone: (260) 431-2021
Fax: (260) 431-2061
E-Mail: agross@sacs.k12.in.us

Our Goal is to Make a Difference

Anita Gross
School Social Worker

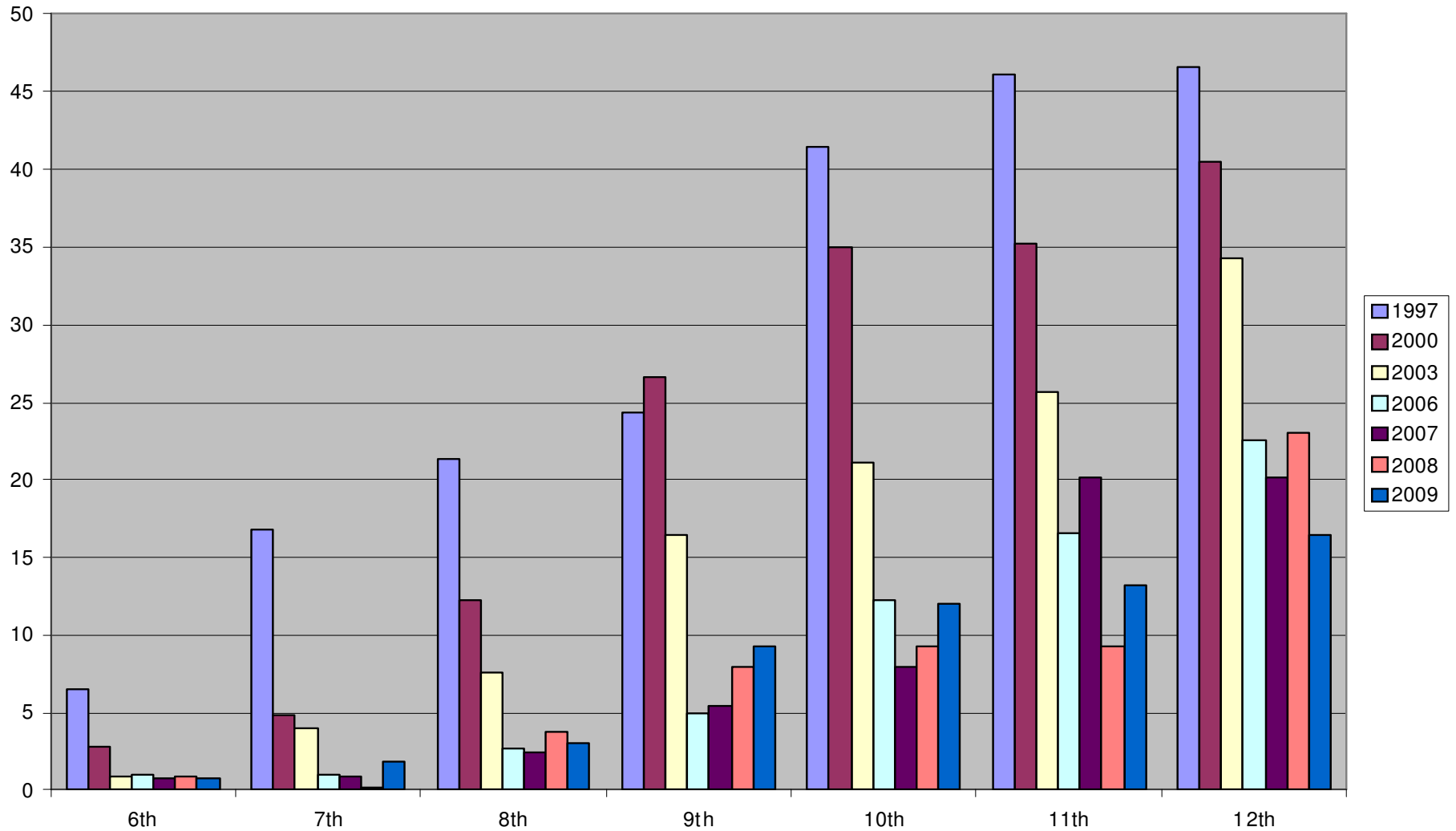
RESULTS FROM THE 2009 SURVEY OF ALCOHOL, TOBACCO AND OTHER DRUG USE BY STUDENTS IN MSD SOUTHWEST ALLEN COUNTY

Survey conducted in March of 2009
Report dated August 2009

- Participants
 - Students in grades 6 through 12
 - 3455 students participated with 89.4% or 3090 usable surveys tabulated
- Survey Conducted by
 - Indiana Prevention Resource Center (IPRC)
School of Health, Physical Education, and Recreation
Indiana University
- Students in SACS have participated in the IPRC survey of student tobacco, alcohol and other drug use in 1997, 2000, 2003, 2006, 2007, 2008 and 2009
- Students were asked to report on their use of 21 different substances in the past 30 days, the past year and in their lifetime
- Results were reported with comparisons to both state and national norms

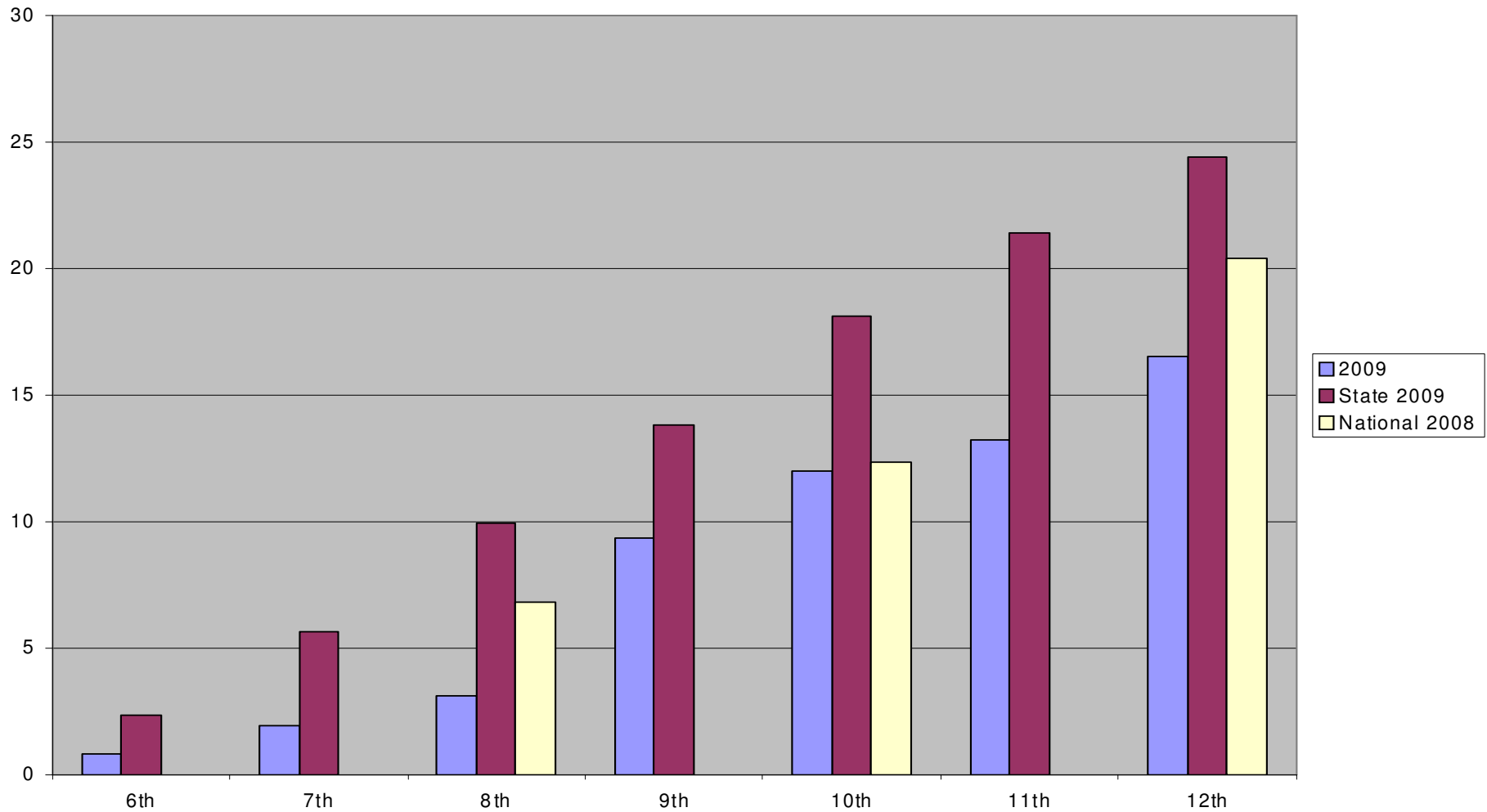
- Have you used cigarettes in the past month (30 days)?

Cigarettes - Used in the past 30 days - 1997-2009



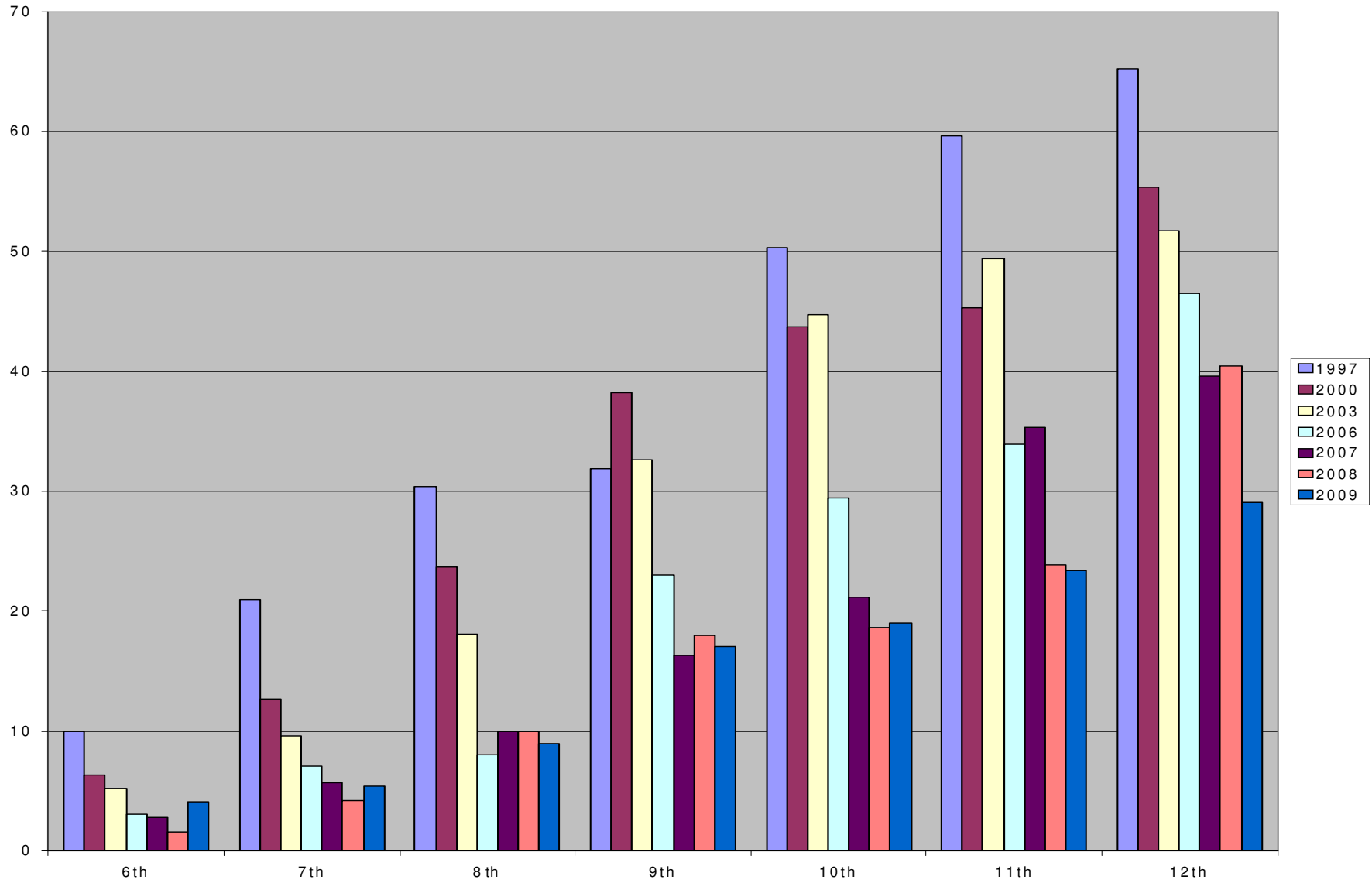
- Comparison of local data to state and national data on cigarette use in the past 30 days:

Cigarettes - Used in the past 30 days
SACS (2009) compared to state (2009) and national (2008) data



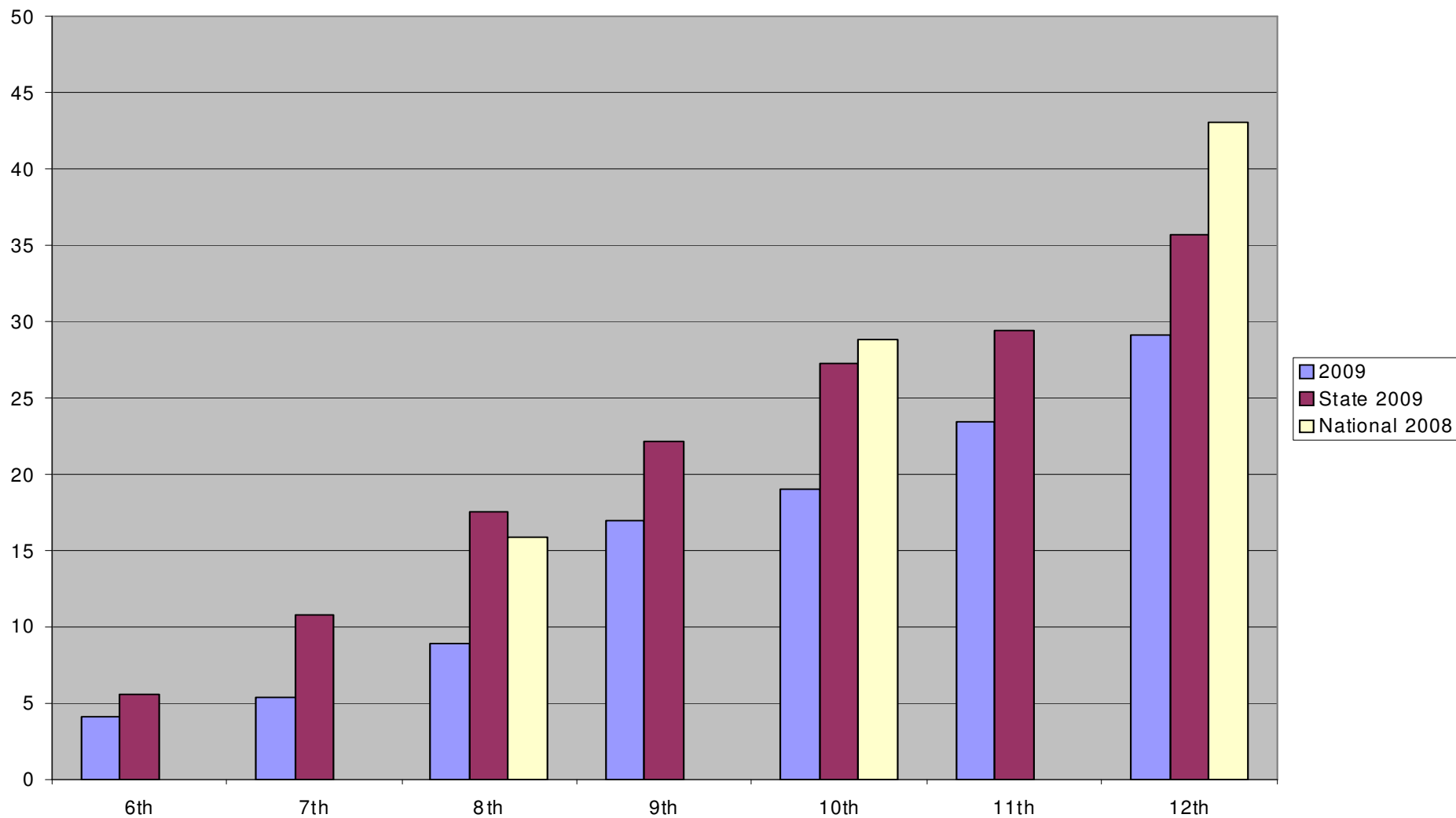
○ Have you used alcohol in the past month (30 days)?

Alcohol - used in the past 30 days - 1997-2009



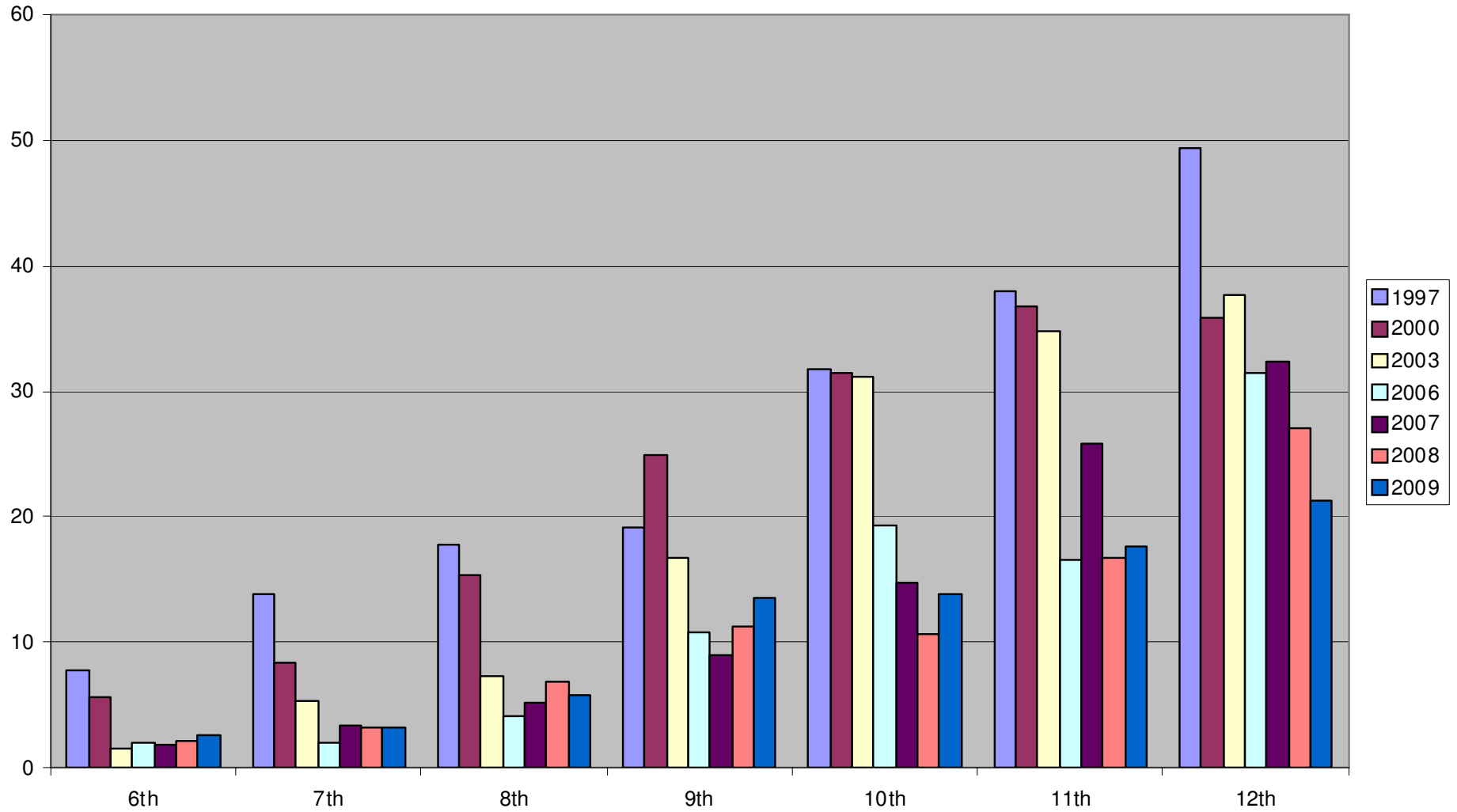
Comparison of local data to state and national data on alcohol use in the past 30 days:

Alcohol - used in past 30 days SACS (2009) compared to state (2009) and national (2008) data



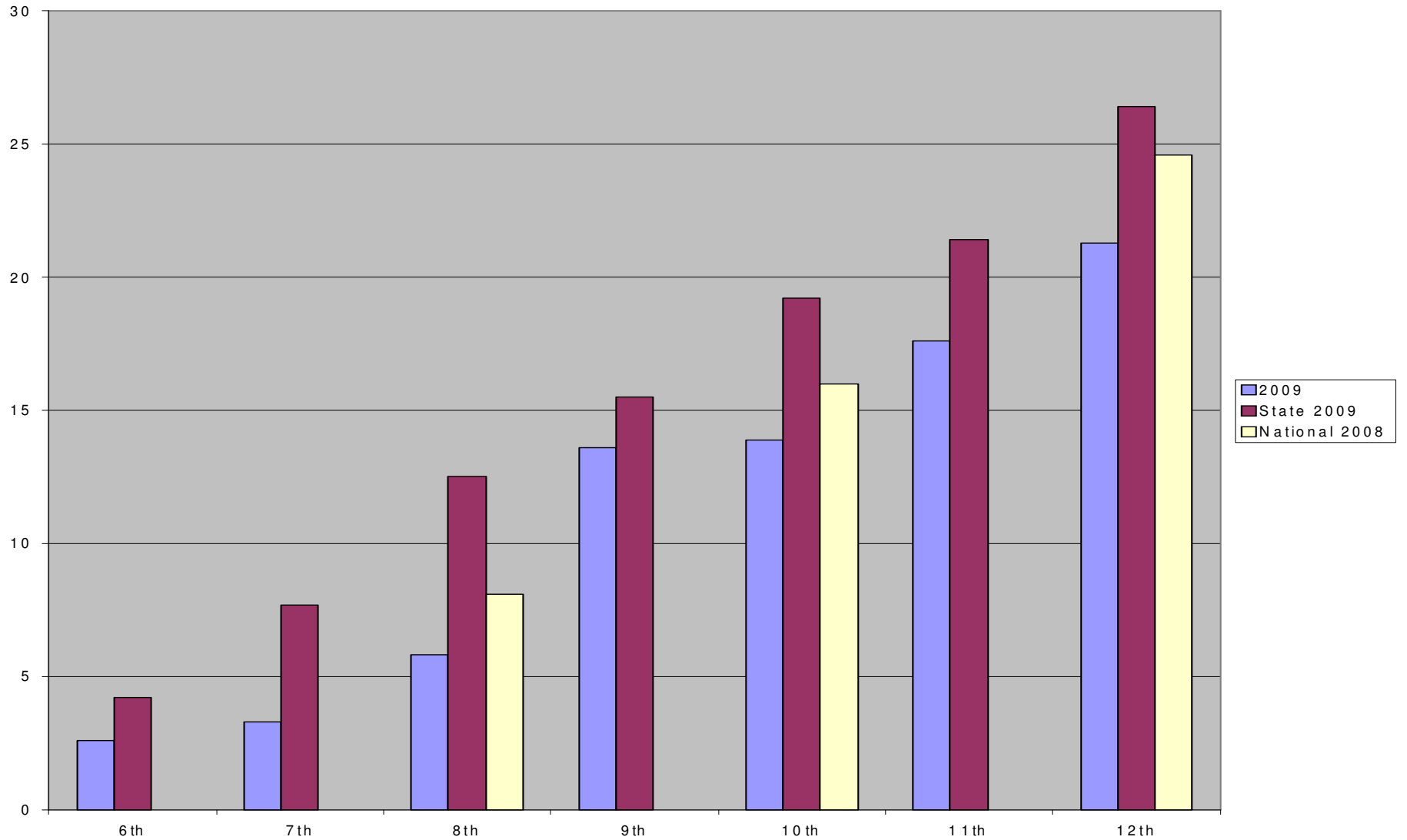
- Binge Drinking – How many times in the last two weeks have you had five or more alcoholic drinks at a sitting?

Binge Drinking - SACS 1997-2009 (5 or more drinks in one setting)



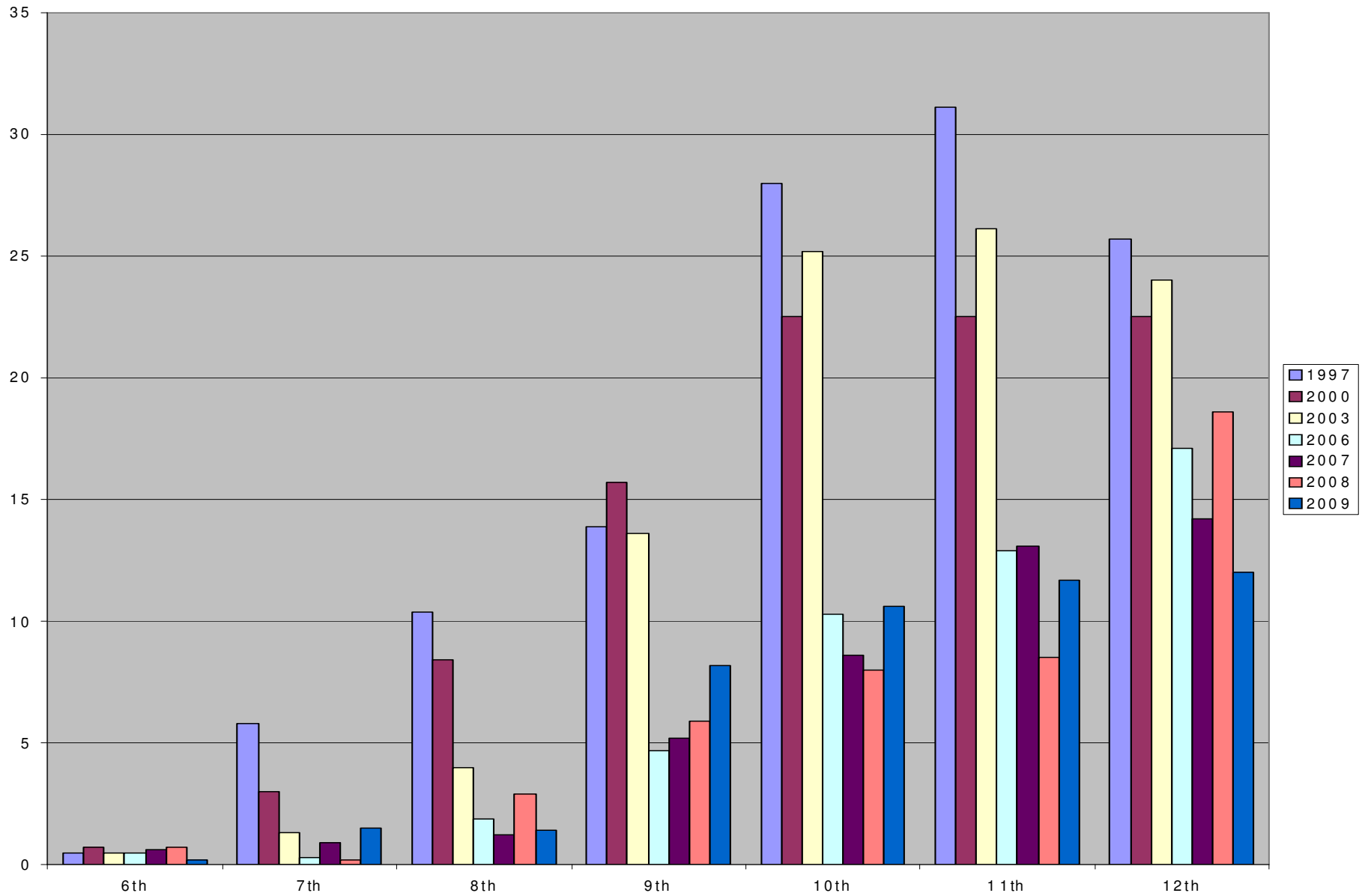
- Comparison of local data to state and national data on binge drinking:

Binge Drinking
SACS (2009) compared to state (2009) and national (2008) data



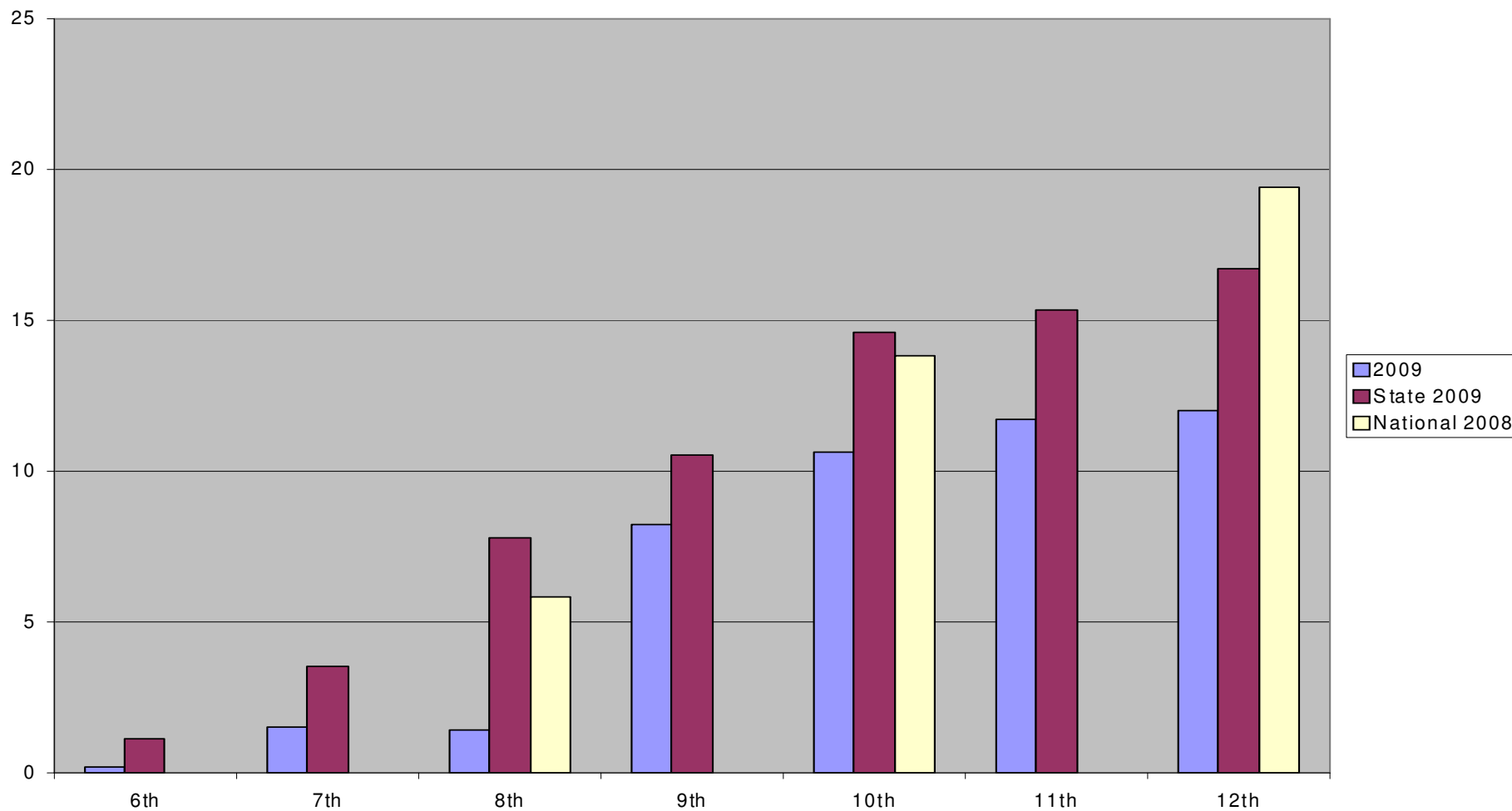
○ Have you used marijuana in the past month (30 days)?

Marijuana - used in the past 30 days - 1997-2009



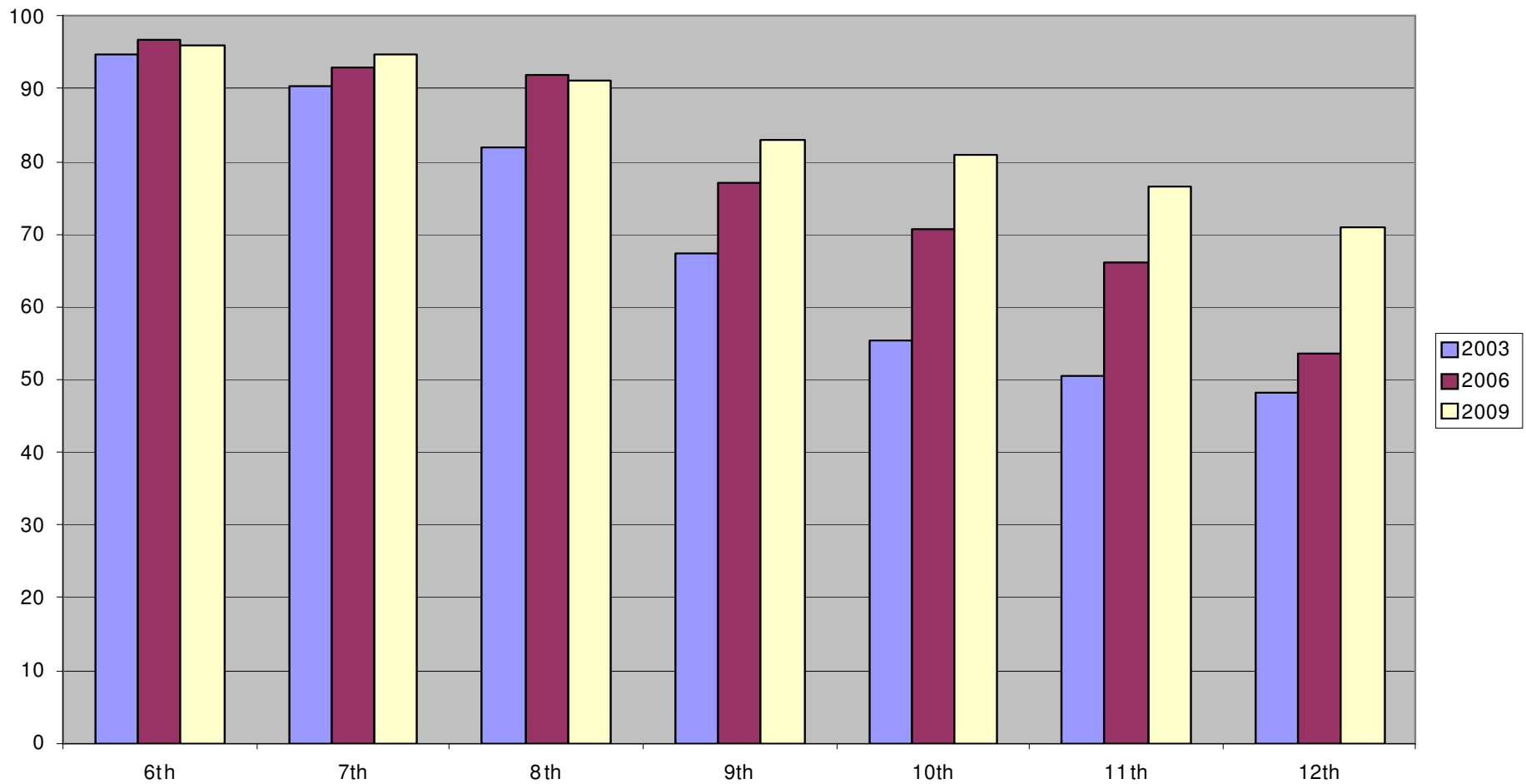
- Comparison of local data to state and national data on marijuana use in the past 30 days:

Marijuana - used in the past 30 days
SACS (2009) compared to state (2009) and national (2008) data



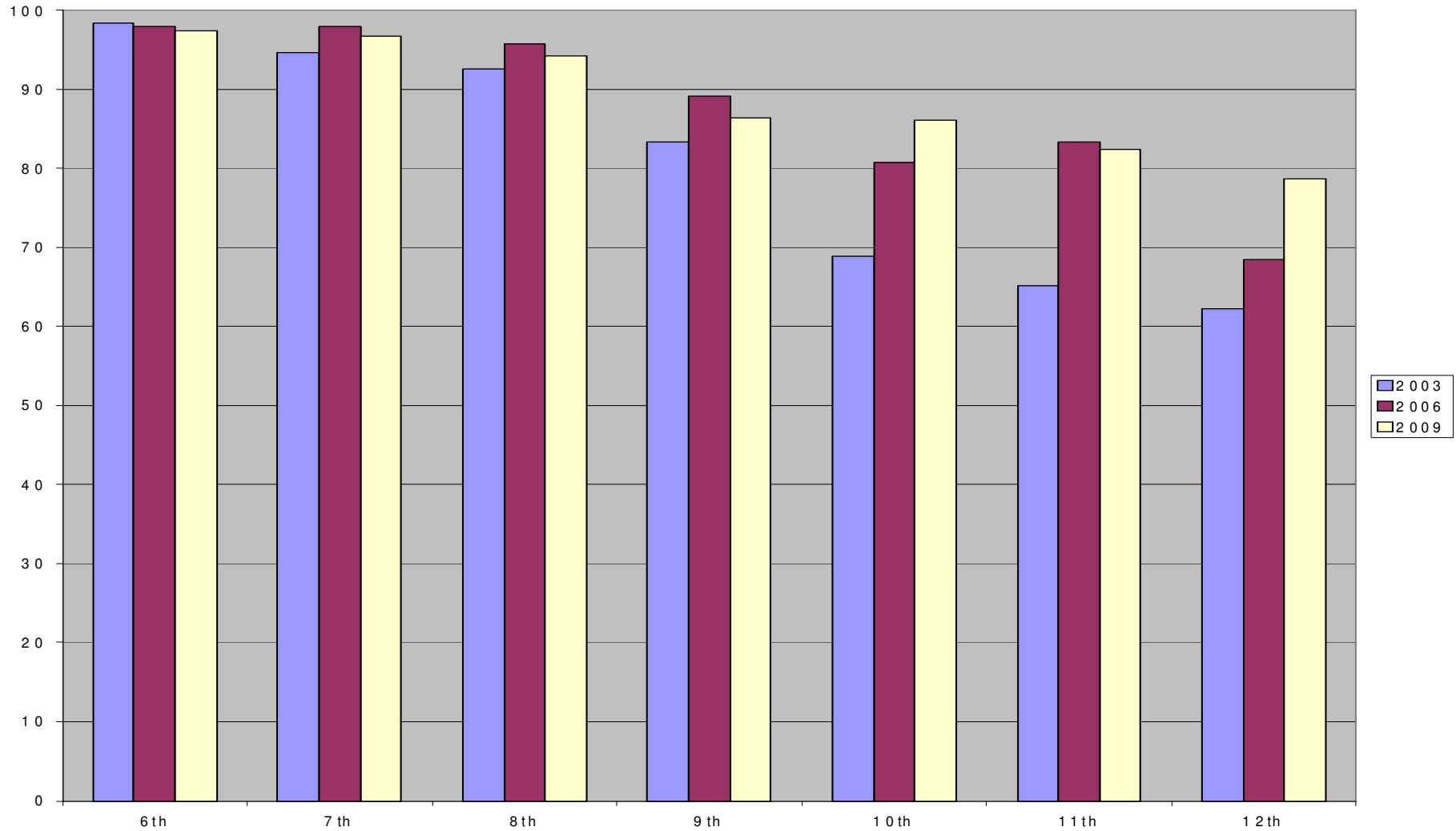
- Students who reported that they **did not** use alcohol in the past 30 days:
 - 2003 – beginning of the NAND project
 - 2006 – first year of random student drug testing
 - 2009 –fourth year of random student drug testing

Did not use Alcohol in the past 30 days 2003 - 2006 - 2009



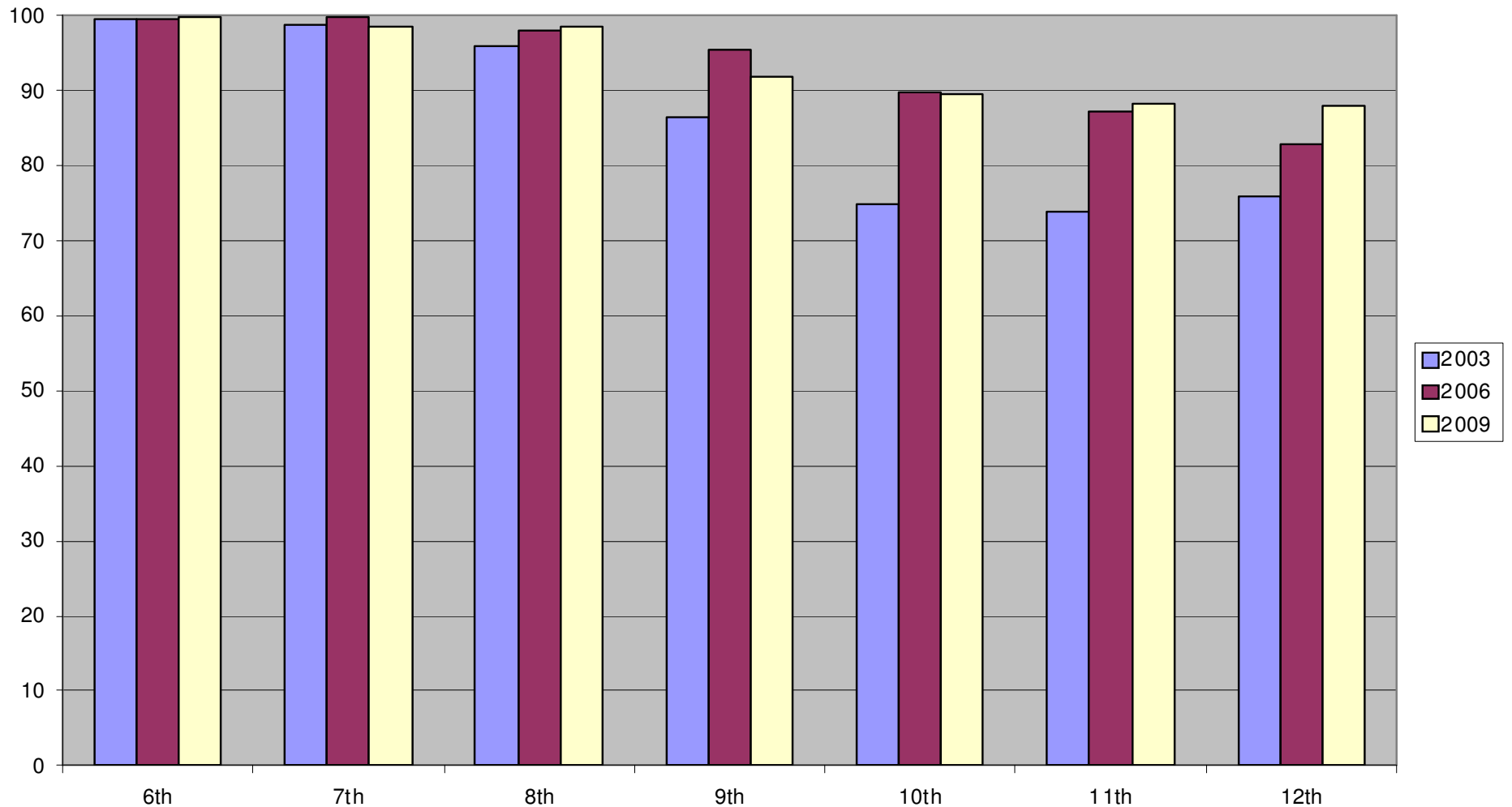
- Students who reported that they **did not** binge drink in the prior two weeks:
 - 2003 – beginning of the NAND project
 - 2006 – first year of random student drug testing
 - 2009 – fourth year of random student drug testing

**Did not Binge Drink in past 2 weeks
2003 - 2006 - 2009**



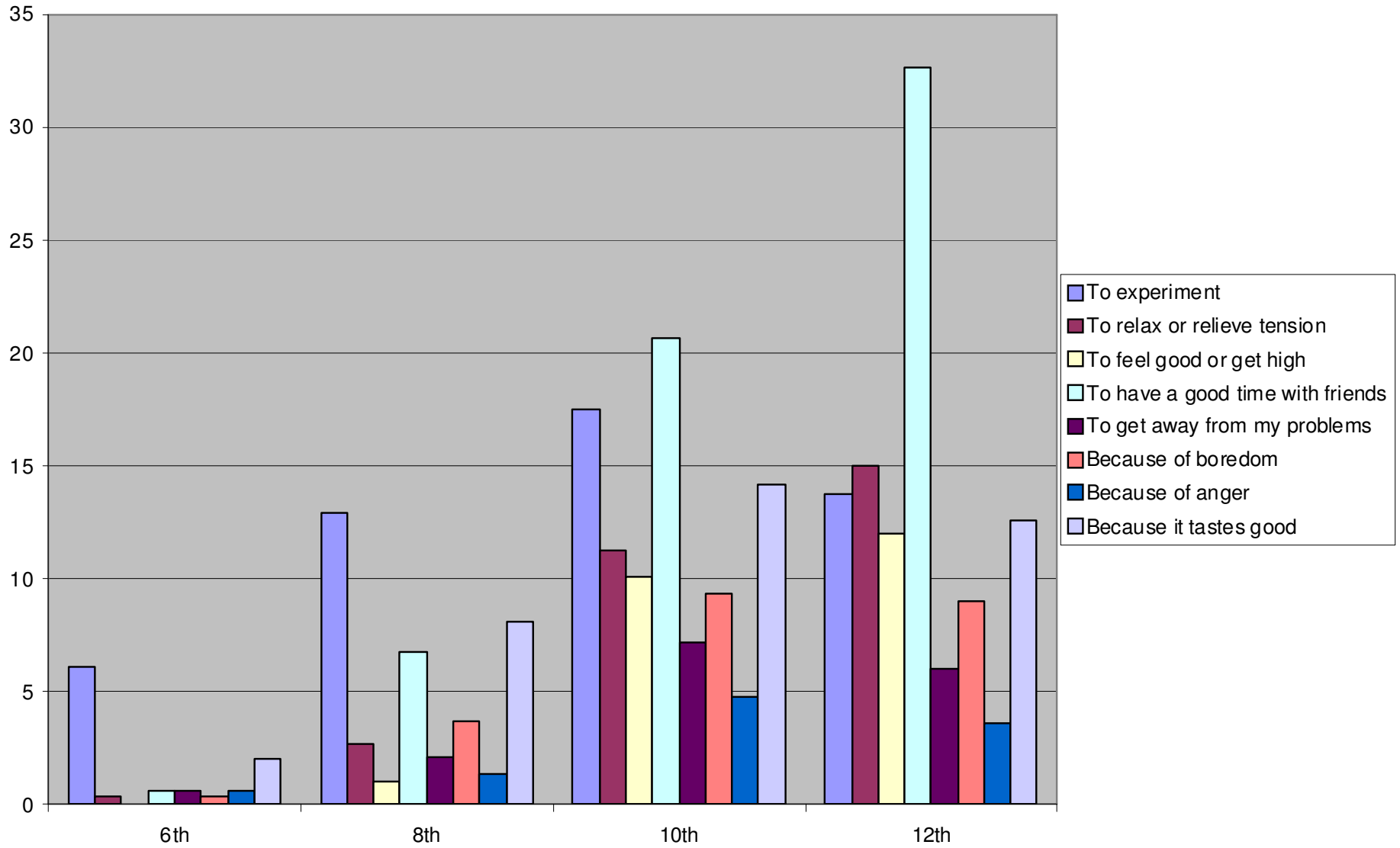
- Students who reported that they **did not** use marijuana in the past 30 days:
 - 2003 – beginning of the NAND project
 - 2006 – first year of random student drug testing
 - 2009 – fourth year of random student drug testing

Did not use marijuana in the past 30 days 2003 - 2006 - 2009



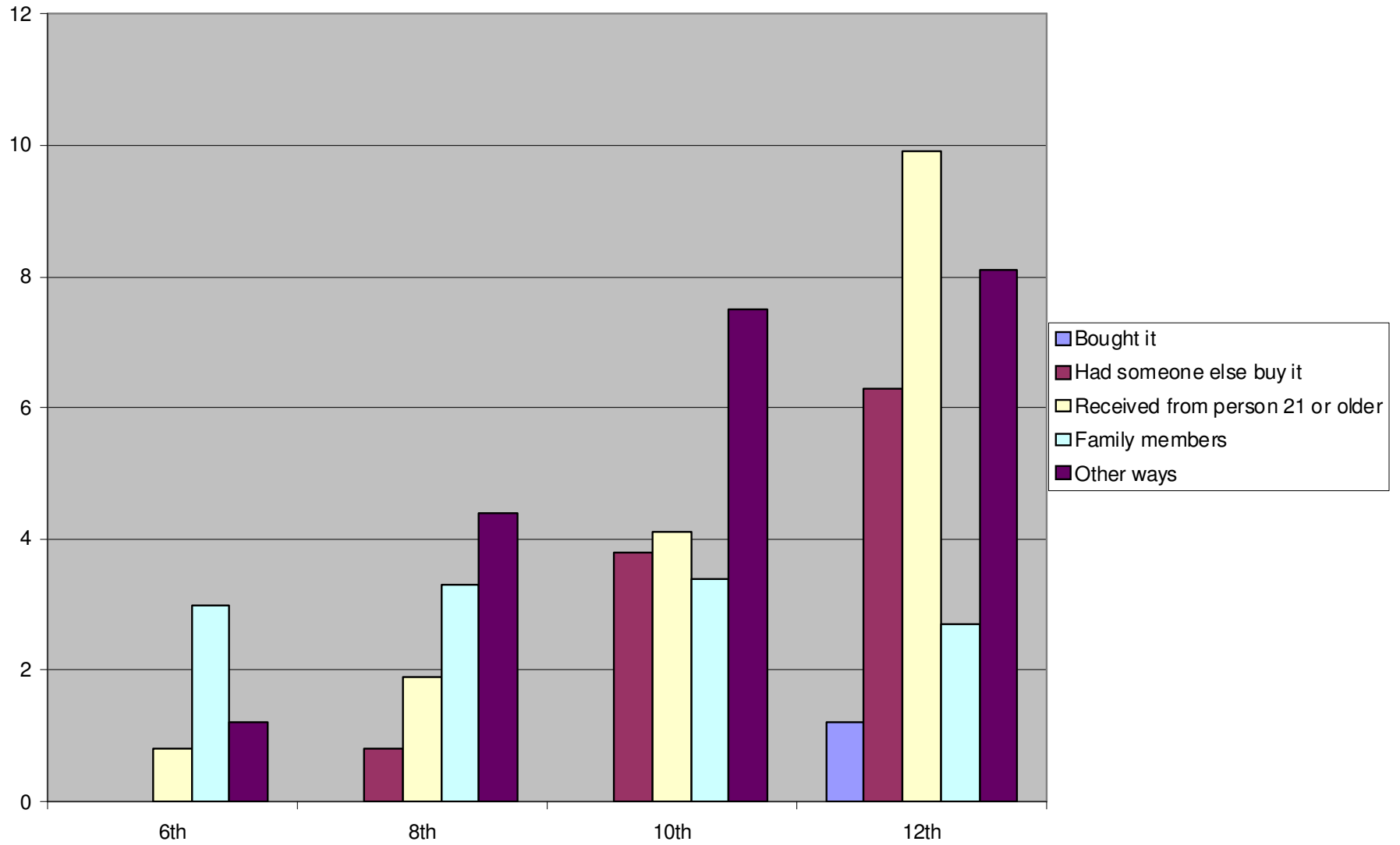
- What have been the most important reasons for your drinking alcohol beverages? (Mark all that apply)

Reasons for drinking



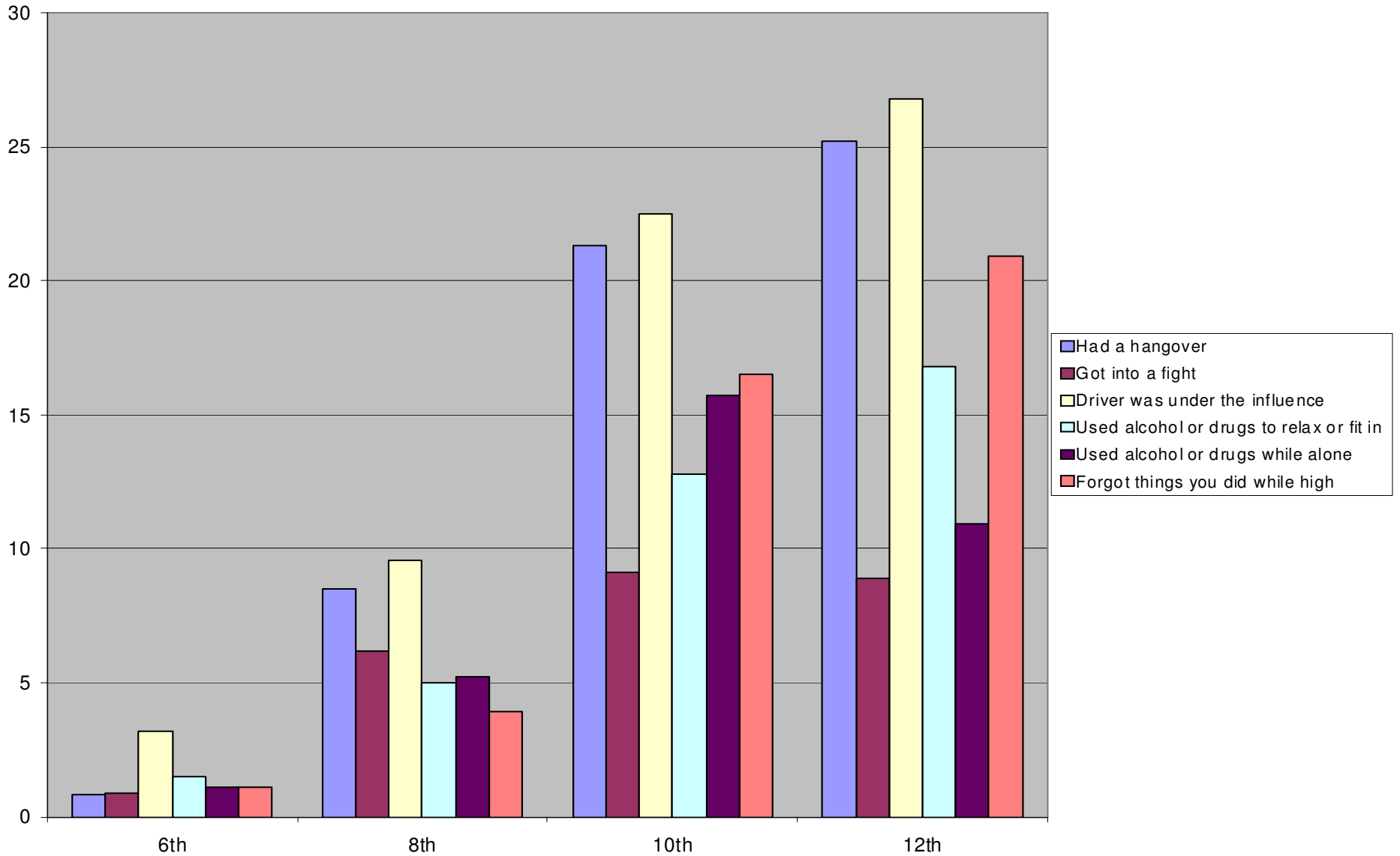
- How did you usually get your alcohol?

Main source of alcoholic beverages



- Have you experienced the following due to drinking or drug use during the past year?

Consequences of alcohol and drug use



Evaluation of the data

- Concerns:
 - While remaining below state and national averages, reported use of cigarettes, alcohol and marijuana has increased at some grades levels between the 2008 and 2009 surveys.
 - The middle school years continue to be the most common time for 1st use of alcohol, cigarettes and marijuana.
 - One quarter of high school seniors reported they had ridden in a car driven by someone who was under the influence of drugs and/or alcohol.

- Positive indicators:
 - At all grade levels the reported use of cigarettes, alcohol, marijuana and other drugs is below state and national averages.
 - The number of students reporting **no use** of alcohol and marijuana has increased since the inception of the NAND project and random student drug testing.
 - Even looking at our 12th grade students, who reported the highest levels of use of any grade,:
 - 83.5% reported no use of cigarettes in the past 30 days;
 - 70.9% reported no use of alcohol in the past 30 days;
 - 78.7% reported no binge drinking in the past two weeks;
 - 88% reported no use of marijuana in the past 30 days.
 - **The majority of our students are making the right choice and saying “No” to illegal drug and alcohol use.**

Summary:

In 2003 the No Alcohol No Drugs (NAND) Task Force was organized due to concern about the level of drug and alcohol use by students in southwest Allen County. The results of the 2009 student drug and alcohol use survey show us that positive change is possible when all stakeholders – school, parents, law enforcement, the community and students – work together. No one action, whether random drug testing, Party Safe Homes or the work of the Homestead SADD group, creates this change alone. We are making progress toward our vision of having a community of drug and alcohol free students, but there is much work still ahead of us.